

Training, Pitch, Health Support and Marketing Partnership Opportunity

INTRODUCING BULA
PRIVATE HOSPITAL AT FIRST
LANDING RESORT IN VUDA
TO THE FIJIAN DRUA



BULA PRIVATE HOSPITAL



Proposed Bula Village Program


BULA PRIVATE HOSPITAL

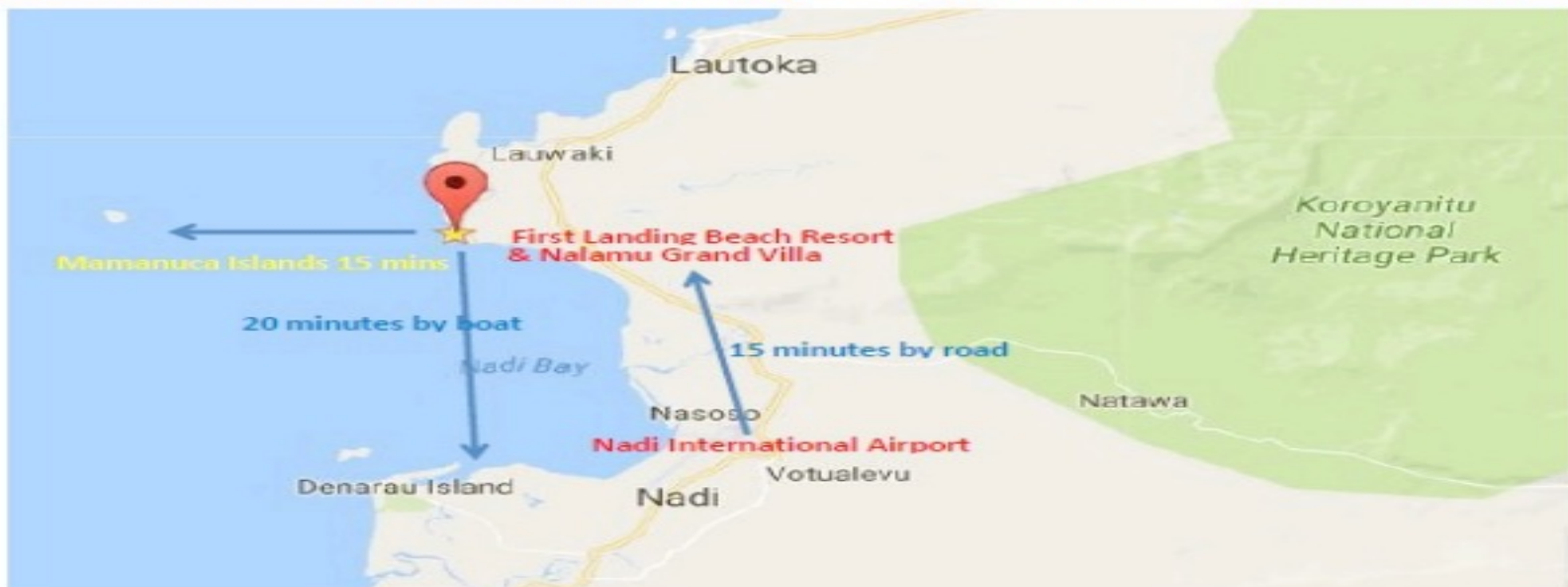
Bula Private Hospital is in the process of purchasing First Landing Resort and its existing development (88 acres in total) plans to build a one stop shop Resort & Private Tertiary Hospital program specializing in:

- **Medical Tourism**
- **Sports Training and Sports Medicine**
- **Fitness & Training Facility**
- **Renown Health and Wellness Facility, Best in Class Globally**
- **Rehabilitation Facility via Stem Cell Technology, etc.**
- **Accommodation** for at minimum two super rugby teams
- **Cultural center** to commemorate & preserve the significance of Viseisei, Vuda as the site where the Fijian I-Taukei forefathers first arrived in Fiji on board the Drua. Hence, the name of the resort as First Landing Resort and the completion of a man-made island as part of the development plans for the resort in the shape of a foot to remember this time in history.

The Fiji Location



Location of First Landing Beach Resort & Villas





Drone shot of First Landing Resort & Expansion Site & Hospital Site

—————  —————
BULA PRIVATE HOSPITAL

First Landing Resort & Vuda Marina Development To Date

—————  —————
BULA PRIVATE HOSPITAL



FIRST LANDING
BEACH RESORT AND VILLAS
FIJI ISLANDS

Additional land has been acquired since this slide was made in 2018



—————  —————
BULA PRIVATE HOSPITAL

FIRST LANDING BEACH RESORT & VILLAS

ARIEL VIEW OF STAGES

ORTON ARCHITECTS

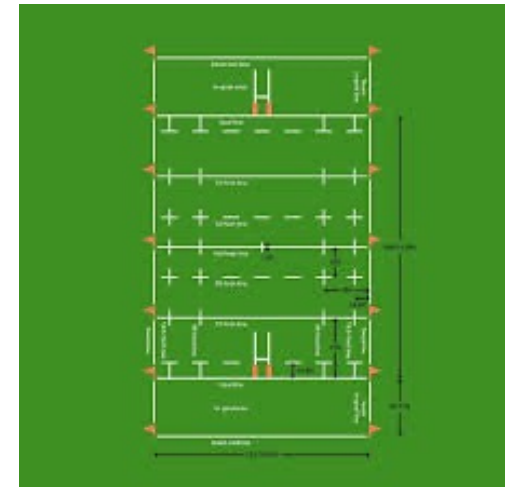
SUITE 6, GRANTHAM PLAZA, RAIWAGA, TEL: (679) 3370955, FAX: (679) 3370955



Current concept designs can be amended to suit the Fijian Drua's needs. A total of 77.23 acres is vacant & ready to be developed.

Fijian Drua Training @ Bula Village

- PROFESSIONAL QUALITY FACILITIES ALLOWING FOR GROWTH AND EXPANSION
- Exclusive Arrangement for use of the training fields where the Fijian Drua are first priority
- Use of the fields would be determined solely upon the use needs of the Fijian Drua
- Two Practice Pitches, where one is fully lit, marked, side stands area, running track, etc.
- Branded surrounding fields, locker rooms, offices, media center, and video review rooms
- Fully built locker room with large lockers and sit down lounge for all players and staff
- Dine in Cafeteria with Nutritionist managed dietary products
- Access to fully equipped Fitness, Wellness and Support Facilities via private entrance
- Private and fully secure physical sites as well as potential accommodation facilities
- World class Orthopedics and other Specialty Medical Services located on site
- Stem Cell Practice for muscle and ligament/tendon rehabilitation
- Complete Video Support (Drone @ camera staging, camera lines and video review rooms




BULA PRIVATE HOSPITAL


FIRST LANDING
BEACH RESORT AND VILLAS
FIJI ISLANDS

Fijian Drua Training Facilities

- Professional Style Locker Rooms
- Carpeted or Tiled flooring
- Color coded lighting to brand the Locker Room as Drua's
- Wide ample spaced lockers for each player
- Each Locker will have lockable closures for phones, etc.
- Each Locker will have charging facilities for phones and tablets
- The Locker Room will have wash and dry facilities and would be serviced by BPH service personnel – (laundry etc.)
- The Locker Room design would be consulted with Fijian Drua team management regarding its look and format
- Ample Shower Facilities and post shower prep area


BULA PRIVATE HOSPITAL


FIRST LANDING
BEACH RESORT AND VILLAS
FIJI ISLANDS

Weight Room Support Team

Golf Cart Transportation on Paths

Lit Facilities for one pitch

Connected Campus to the training pitches, weight training, locker rooms, learning rooms, video review rooms, cafeteria, nutritionist advisory offices etc.

Short term and long term personnel accommodations

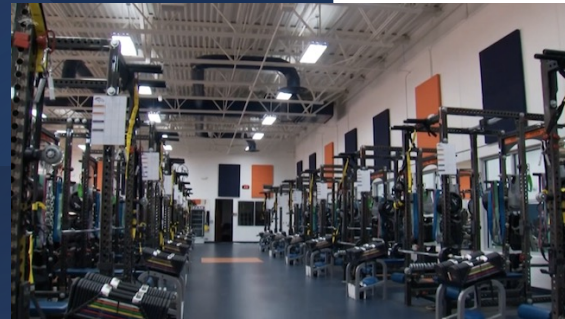
Complete Wellness/Fitness Center

Easy access to beach front and campus



Fijian Drua Locker and Weight Room Sample Designs

—————[👑]—————
BULA PRIVATE HOSPITAL



FIRST LANDING
BEACH RESORT AND VILLAS
FIJI ISLANDS

Bula Private Hospital

The Drua's
International
Best in Class
Medical
Support Team

—————  —————
BULA PRIVATE HOSPITAL



Provide a world class Health Services facility based at First Landing which would leverage Fiji's world class brand and tourism market, to provide medical tourism health services, in a First-Class Resort Setting.

The Solution

—————  —————
BULA PRIVATE HOSPITAL

- Orthopedic Services led by US and Australian Medical Professionals
- Cardiology Services led by leading authorities from Australia
- World Class Radiology Department (3 Tesla MRI / 256 Slice CAT scan (+))
- Special Best in Class Oncology Support Services
- Cosmetic Surgery Services from Thailand and other locations

Bula Private Hospital will be 80% Fijian but led by world renown physicians



The Arrival Experience



BULA PRIVATE HOSPITAL



FIRST LANDING PLANNED FORESHORE DEVELOPMENT AT VUDA
(NOTE VUDA MARINA FORESHORE DEVELOPMENT IN THE BACKGROUND)

AA PiDESIGN
www.aapidesign.com



— — — — —
BULA PRIVATE HOSPITAL

Barstock Developments Ltd
(First Landing Resort)
**Proposed Oceanview Resort,
Cultural & Environmental Awareness Centre**
Proposed Stage 5 Perspective
June 2020



FIRST LANDING
BEACH RESORT AND VILLAS
FIJI ISLANDS



44.23 acres- View East



BULA PRIVATE HOSPITAL

- Potential site for the “**Fijian Drua Home**” boasting uninterrupted ocean view facing directly east (sunset) and mountain view (sunrise) facing directly west. Walking distance to First Landing’s naturally white sandy beach and crystal-clear blue waters. Two-minute golf cart or car drive to Bula Private Hospital and its Health and Wellness Facility proposed site. Can be walking distance once development completed. This is the actual view of the prior concept in slide 11



FIRST LANDING
BEACH RESORT AND VILLAS
FIJI ISLANDS



44.23 acres

- North view of the potential site for the Fijian Drua looking towards Lautoka city

—————  —————
BULA PRIVATE HOSPITAL



FIRST LANDING
BEACH RESORT AND VILLAS
FIJI ISLANDS



44.23 acres - View South • Naisoso Island, Nadi Airport and Denarau Island in the background from left to right

—————[👑]—————
BULA PRIVATE HOSPITAL





33 acres

—————  —————
BULA PRIVATE HOSPITAL

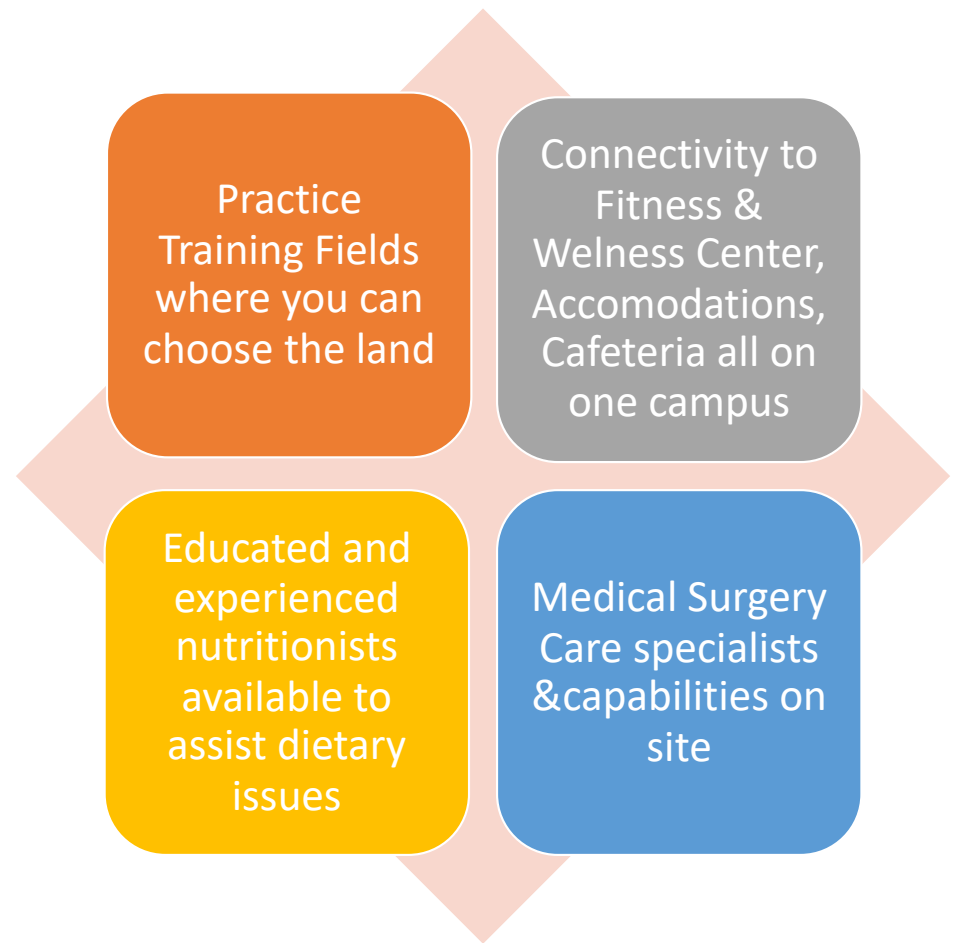
- Proposed Hospital plus Stem Cell Rehabilitation and Health and Wellness extension site etc. This will be a gated community.



FIRST LANDING
BEACH RESORT AND VILLAS
FIJI ISLANDS

We look forward to your favorable response to our high level custom proposal and we would like to request of you to open joint negotiations with the Fijian Drua regarding a sustainable long term partnership.

No upfront CAPEX costs to the Fijian Drua. Reasonable operations and site rental fees, first nation surgery pricing plans and planned community coordination, security and privacy.





BULA PRIVATE HOSPITAL

Thank you!

Please Contact

Dr. Sailosi Ratumaitavuki
Founder and Board Member
Email: sailosir@gmail.com

Mobile +679.940.7927 / WA

Tom Wilson
Corporate Adviser/Investment Head
tomwilson@navitimanagement.com

Mobile +1.602.821.7196 / WA / Telegram

